

BAILI 百力®

Joint Creates Infinity



2024

Baili Tools Catalogue

BAILI 百力®



WeChat official account

Baili (chongqing) technology co.,Ltd

Tel:+86-023-62585008
stevenchong@bailitools.com
Website:www.bailitools.com

Address:No.29 Jianshe Avenue, Huaxi Industrial Park, Banan District,
Chongqing City, China.

specification for reference only. Subject to product appearance, design and technical modifications without prior notice.

BAILI 百力®

Joint Creates Infinity

Company Information

Baili(Chongqing)Technology Co.,Ltd. is a company focusing on the R&D manufacture and sales of power tools. It is jointly founded by Chongqing Hybest Tools(Group), Guangdong SunrisingTools and Guangdong Meite Machinery. As a new force in the power tool industry, Baili Technology always takes "providing customers with high-quality products and services"as its corporate mission, and adheres to the development concept of "taking technological innovation as the fundamental and users' demand as the development direction. The company has been committing all its effects to becoming an innovator in the power tool industry.

Brand Introduction

Baili's professional power tools have the following features: strong power, novel structure, excellent performance, stable quality, light body, high durability, intelligent operation and more. The tools are not only widely used in various industries, but also recognized as the best choice for professional users on high intensive and continuous operations.

CONTENTS

- 01 Battery & Charger
- 05 Drilling & Driving
- 09 Wrench
- 09 Surfacing
- 11 Cutting
- 15 Fastening
- 19 Household



Battery cell holder
Fully fixes and protects the battery cell, improves battery durability

Battery indicator light
Displays battery remaining power, clear and easy to check

Battery shell material and design
The battery shell is made of flame-retardant materials, with a drop off-proof design that creates more room for impact absorption

High strength battery slide rail
Durable sliding rail, which can be firmly connected to the battery and tools, holds tight after long-time work, suitable for heavy loaded working environment

High quality battery cell
Durable sliding rail, which can be firmly connected to the battery and tools, holds tight after long-time work, suitable for heavy loaded working environment

Quick heat dissipation
Fast air channel cooling technology, easy for battery to dissipate heat, enabling for more fully charging and discharging, to avoid burns and work more durably

The sealing ring at the charger's air vent forms an airtight channel when the battery is installed

High power quick charge

Regular charger current output 2.5A, Baili charger max current output 5A, which can fully charge the battery in very short time

Battery charging time

| | Fast charger | Intelligent quick charger |
|-------|--------------|---------------------------|
| 2.0Ah | 65 min | 25 min |
| 4.0Ah | 135 min | 48 min |
| 5.0Ah | 175 min | 58 min |
| 6.0Ah | 210 min | 68 min |
| 7.5Ah | 260 min | 85 min |
| 9.0Ah | 300 min | 100 min |

Intelligent electronic control system

Always maintaining the balance between current and temperature, so keep long battery life and best charging condition

- When temperature is too high, current output will be adjusted automatically
- When temperature drops, current output will increase accordingly

Intelligent temperature control system

Baili charger built-in intelligent cooling fan allows the intelligent temperature control system operates when temperature of the battery reaches a certain level, always circulating the air around the battery. The battery is able to charge quickly while cooling down, to greatly reduce the charging hours

20V MAX

2.0Ah

4.0Ah

5.0Ah

6.0Ah

7.5Ah

9.0Ah



| BP2020A | BP2040A | BP2050A | BP2060A | BP2075A | BP2090A |
|---------------------------|---------------------------|---------------------------|---------------------------|---------------------------|---------------------------|
| Battery capacity(Ah): 2.0 | Battery capacity(Ah): 4.0 | Battery capacity(Ah): 5.0 | Battery capacity(Ah): 6.0 | Battery capacity(Ah): 7.5 | Battery capacity(Ah): 9.0 |
| Weight(kg): 0.4 | Weight(kg): 0.64 | Weight(kg): 0.64 | Weight(kg): 0.9 | Weight(kg): 0.9 | Weight(kg): 0.9 |

Fast charger



| BC161S-20V | |
|--------------------|---------|
| Rated Voltage(V): | 100-240 |
| Rated Hertz(Hz): | 50/60 |
| Voltage Output(V): | 20 |
| Charging power(W): | 33 |

Intelligent quick charger



| BC501S-20V | |
|--------------------|---------|
| Rated Voltage(V): | 100-240 |
| Rated Hertz(Hz): | 50/60 |
| Voltage Output(V): | 20 |
| Charging power(W): | 110 |

BAILI 百力®

Joint Creates Infinity



20V MAX LITHIUM-ION



20V Brushless 13mm(1/2") Drill Driver

BL1304

60 N.m
Max. fastening torque

2250 rpm
Max. PRM

BL1304 20V Brushless 13mm(1/2") Drill Driver

Metal self-locking chuck

2-speed shift

Stepless speed change switch
Smooth speed change, instant on/off

LED work light
Wide angle lighting, high brightness and delay switch-off function

1st speed: 520r/min:
High torque heavy operation

2nd speed: 2250r/min:
Low torque fast operation

Belt clamp design

One button for clockwise and anti-clockwise rotation

21-shift torque & flat drill mode switch

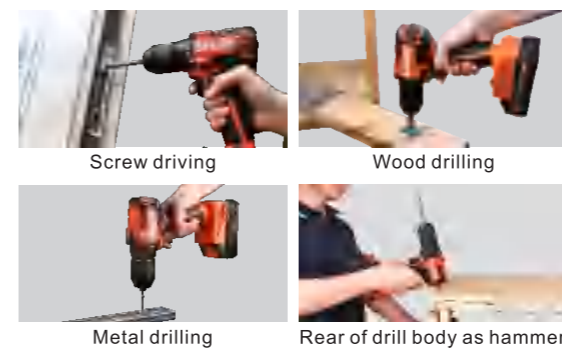
1-21 shift torque adjustment, higher gear for higher torque. Different gear setting to fit in various working conditions

Flat drill function for wood, metal, aluminium alloy, ceramic, glass, plasterboard drilling

More compact body

Small size design
higher mobility
Fit in narrow working areas

160mm



| Specification | |
|---|------------|
| No-load speed(1st speed/2nd speed)(rpm) | 520/2250 |
| Max. hard torque(N.m) | 60 |
| Max. soft torque(N.m) | 33 |
| Max. chuck diameter(mm) | 13 |
| Max. drilling diameter(mm) | 32 |
| Size(mm) | 210×79×163 |
| Tool weight(without battery)(kg) | 1.1 |

Brushless Drill Driver Series



| Specification/Model no. | BL1301 | BL1401 | BL1404 | BL1307 | BL1407 | BL1310 |
|--|----------|------------|------------|----------|------------|-------------------|
| No-load speed (1st speed/2nd speed)(rpm) | 460/1500 | 460/1500 | 520/2250 | 480/2100 | 480/2100 | 460/920/2150/4300 |
| Max. hard torque(N.m) | 40 | 40 | 60 | 110 | 110 | 130 |
| Max. soft torque(N.m) | 25 | 25 | 33 | 55 | 55 | 60 |
| Blows perminute(bpm) | | 6900/30000 | 7800/33750 | | 7200/31500 | |
| Max. chuck diameter(mm) | 13 | 13 | 13 | 13 | 13 | 13 |
| Tool weight(without battery)(kg) | 28 | 28 | 32 | 40 | 40 | 60 |



20V Brushless 22mm Rotary Hammer

BL1204

2.1 J
Impact Energy

4500 bpm
High rotatory speed

BL1204 20V Brushless 22mm Rotary Hammer



4 in 1 functional switch
Chiseling/adjustment/hammer
drilling/drilling mode switch

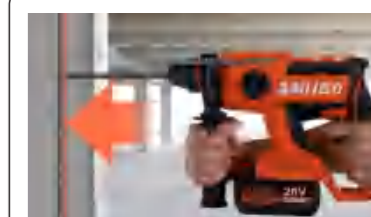


Auxiliary handle
Quick and multiple-angle
adjustment



**Clockwise and anti-clockwise
rotation switch**

Stepless speed change switch
Smooth speed change for easier control



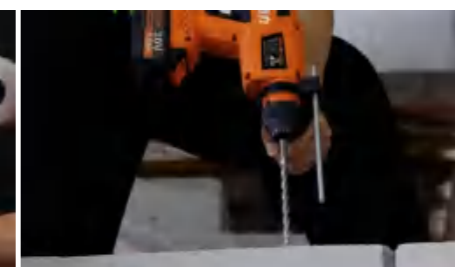
**Safety clutch tripping
technology**
When drilling into a hard object, the
hammer trips and stops instantly to
protect operator from twisting arms

| Specification | |
|----------------------------|--------|
| No-load speed(rpm) | 0-1400 |
| Impact rate(bpm) | 0-4500 |
| Impact energy(J) | 2.1 |
| Optimal drilling range(mm) | 6-22 |

| Specification | |
|----------------------------------|---------------------------|
| Max. drilling diameter(mm) | Concrete26 Metal13 Wood28 |
| Chuck type | SDS-PLUS |
| Size(mm) | 295×86×212 |
| Tool weight(without battery)(kg) | 1.9 |



Chiseling



Hammer drilling



Flat drilling mode

BL1201 20V Brushless 16mm Rotary Hammer



| Specification | |
|----------------------------------|---------------------------|
| No-load speed(rpm) | 0-1100 |
| Impact rate(bpm) | 0-5000 |
| Impact energy(J) | 1.6 |
| Max. drilling diameter(mm) | Concrete16 Metal10 Wood24 |
| Optimal drilling range(mm) | 6-12 |
| Chuck type | SDS-PLUS |
| Size(mm) | 265×81×163 |
| Tool weight(without battery)(kg) | 1.5 |





20V Brushless 1/2"(12.7mm) Impact Wrench

BL4101

300 N.m
Max. Torque

2200 rpm
No-load speed

BL1304 20V Brushless 1/2"(12.7mm) Impact Wrench

Tungsten steel spindle
High strength and durable

Stepless speed switch
Smooth speed change, not easily fatigued



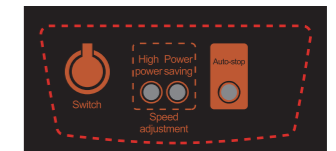
Ergonomically designed grip
Comfortable holding and better handling performance reducing hand fatigue and pain

Belt clamp design

300
N.m

Around **420** pcs
The working capacity of tighten and loosen M16 bolt by a full 4.0Ah battery

Operation mode switch
Different operation modes to fit in various work needs of bolt tightening



| Specification | | Specification | |
|------------------------|---------|----------------------------------|--------------|
| Max. torque(N.m) | 300 | Square head spindle(inch) | 1/2"(12.7mm) |
| Max.loosen torque(N.m) | 330 | Recommend sleeve size(mm) | 13-27 |
| Standard bolt | M10-M18 | Size(mm) | 147×79×203 |
| High strength bolt | M8-M14 | Tool weight(without battery)(kg) | 1.1 |

Reverse auto-stop system
Prevent screws falling off



Brushless Impact Wrench Series



| Specification/Model no. | BL4104 | BL4107 | BL4110 | BL4113 |
|---------------------------|--------------|--------------|------------|------------|
| Max. torque(N.m) | 550 | 850 | 1500 | 2000 |
| Max.loosen torque(N.m) | 600 | 1000 | 1700 | 2200 |
| Standard bolt | M10-M22 | M12-M24 | M14-M30 | M14-M36 |
| High strength bolt | M8-M16 | M10-M18 | M12-M22 | M12-M27 |
| Square head spindle(inch) | 1/2"(12.7mm) | 1/2"(12.7mm) | 3/4"(19mm) | 3/4"(19mm) |
| Recommend sleeve size(mm) | 13-24 | 16-27 | 18-32 | 21-55 |

| Specification/Model no. | BL4120 | 2500 N.m |
|---------------------------|------------|--------------------|
| Max. torque(N.m) | 2500 | |
| Max.loosen torque(N.m) | 2800 | |
| Standard bolt | M14-M39 | |
| High strength bolt | M14-M30 | |
| Square head spindle(inch) | 1"(25.4mm) | |
| Recommend sleeve size(mm) | 21-60 | |



| Specification/Model no. | BL4123 | 3000 N.m |
|---------------------------|------------|--------------------|
| Max. torque(N.m) | 3000 | |
| Max.loosen torque(N.m) | 3300 | |
| Standard bolt | M14-M45 | |
| High strength bolt | M14-M36 | |
| Square head spindle(inch) | 1"(25.4mm) | |
| Recommend sleeve size(mm) | 21-70 | |



BL2201 20V Brushless 100mm(4") Angle Grinder



9000 rpm
Max. RPM

- Safety switch**
On: push and press to lock-on
Off: slightly press threaded part of the switch
- 4-speed shift**
Choose different gear to fit in various working conditions for precise grinding operation
- Brushless motor**
More powerful, durable and quiet
- Principal axis self-locking button**
Only one-button to lock the Principal axis for convenient changing of the cutting wheels
- Comfortable grip**
Ergonomic design for comfortable holding
- Removable high density dustproof net**
Effectively preventing dust entering, improving tools durability
- Detachable auxiliary handle**
Handels can be attached to left/right sides for more steady operation and difference conditions
- Quick-change metal guard**
No need of extra tools for loading and adjusting angle
- Rotatable metal head shell**
90° rotatable head shell to suit cutting operation
High quality,durable and drop resistant



Grinding



Cutting

| Specification | |
|----------------------------------|---------------------|
| Max. Power output(W) | 1000 |
| No-load speed(rpm) | 5000/6200/8000/9000 |
| Max. wheel diameter(mm) | 100 |
| Size(mm) | 305×85×80 |
| Tool weight(without battery)(kg) | 1.5 |

BL3101 20V Brushless 140mm(5-1/2") Circular Saw



- Rotatable vacuum-hose adapter**
360° rotatable using
- Safety switch**
Preventing false starts and cutting injury risk
- 6900** rpm
Max. RPM
- 52** mm
Max. cut depth
- Bevel adjustment knob**
0-45° adjust freely
- Cutting depth adjustment knob**
Adjust the cutting depth freely
- Electronic brake**
0.5s emergency stop
- Movable guard**
Full protection among cutting process
- Auxiliary footplate**
Steel footplate and deformation resistance
Wear resistance and high precision



Wood cutting

| Specification | |
|----------------------------------|-------------|
| No-load speed(rpm) | 6900 |
| Max. cut depth(mm) | 90°:52 |
| | 45°:35 |
| Circular saw size/Arbor(mm) | 140/20 |
| Footplate size(mm) | 220×110 |
| Size(mm) | 332×149×245 |
| Tool weight(without battery)(kg) | 2.0 |



BL3104

20V Brushless 165mm(6-1/2") Circular Saw

Rotatable vacuum-hose adapter
360°rotatable using

Safety switch
Preventing false starts and cutting injury risk

Specialized for cordless tools

Infrared laser instrument
Cutting assistance

Bevel adjustment knob
0-45° adjust freely

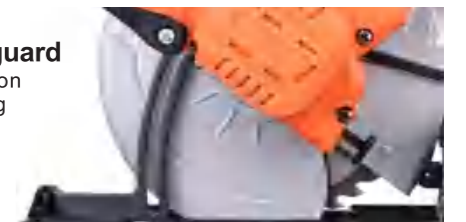
Saw fence
Convenient for multiple equal width cutting operations



Auxiliary footplate
Steel footplate and deformation resistance Wear resistance and high precision

Movable guard
Full protection along cutting process

Cutting depth adjustment knob
Adjust the cutting depth freely



Specification

| | |
|----------------------------------|-------------|
| No-load speed(rpm) | 4200 |
| Max.cut depth(mm) | 90°:61 |
| | 45°:41 |
| Circular saw size/Arbor(mm) | 165/20 |
| Footplate size(mm) | 260×130 |
| Size(mm) | 297×171×262 |
| Tool weight(without battery)(kg) | 2.75 |

20V Brushless 165mm(6-1/2") Circular Saw

BL3104

61 mm
Max.cut depth

4200 rpm
Max.RPM

BL3107

20V Brushless 185mm(7-1/4") Circular Saw



Specialized for cordless tools

Specification

| | |
|----------------------------------|-------------|
| No-load speed(rpm) | 4200 |
| Max.cut depth(mm) | 90°:71 |
| | 45°:47 |
| Circular saw size/Arbor(mm) | 185/20 |
| Footplate size(mm) | 280×130 |
| Size(mm) | 322×170×272 |
| Tool weight(without battery)(kg) | 2.9 |

BLF3201 20V F32 Nailer

Solve nail jam patented structure

Patented structure can intelligently detect nail jam, stop the nailer and automatic reset the firing pin



Single and bump fire switch

single / bump fire optional

Weight(without battery)

2.0 kg

Durable firing pin

Lifetime up to **100,000** times



Air spring drive design

Innovative air spring drive can increase the nailing speed



Tool-free jam release mechanism

Quick nail removal

Safety rack design

Safe nailing, prevent misoperation

Thumb turn depth setting

Adjust the nailing depth

Good gravity balance



Gravity

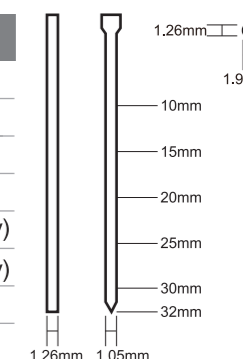
High quality magazine

Anodization and durable magazine



Specification

| | |
|----------------------------------|--|
| Fastener length(mm) | 10-32 |
| Fastener diameter(mm) | 1.26 |
| Driving count per second(pcs/s) | 3 |
| Loading Capacity(pcs) | 100 |
| Driving count per charge(pcs) | 1400pcs (a full 2.0Ah battery) 3000pcs (a full 4.0Ah battery) |
| Size(mm) | 260 × 80 × 260 |
| Tool weight(without battery)(kg) | 2.0 |



20V F32 Nailer

BLF3201

3 pcs/s
Nailing speed

3000 pcs
A full 4.0Ah battery nailing capacity



Indoor decoration



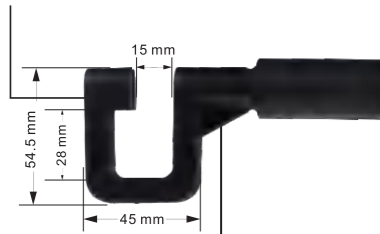
Furniture manufacturing



Exhibition construction

BL4601 20V Metal Stud Crimper

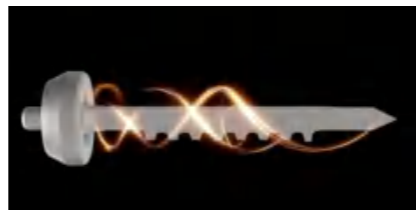
Cast steel head
Durable and wear-resistant



360° rotatable head
Adjusting angle freely to suit different positions



Durable firing pin
Lifetime up to 100,000 times



No nail rivet
Firing pin punches two plates, fixed them together completely



Cordless, no compressor



Compatible plate thickness

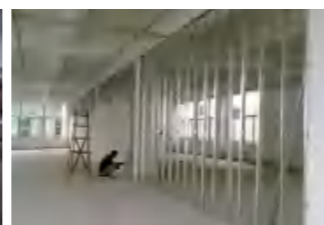
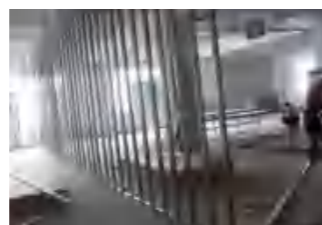
Steel plate
≤0.8mm

Aluminum plate
≤1.0mm

Specification

| | |
|----------------------------------|---------------------------------------|
| Punch size(mm) | 3 × 8 |
| Max. material thickness(mm) | Steel plate ≤0.8 Aluminum plate ≤1 |
| Stroke length(mm) | 15 |
| Size(mm) | 325 × 80 × 220 |
| Tool weight(without battery)(kg) | 1.5 |

Various application



Workshop construction

Indoor decoration

BL4301 20V Brushless 2.4-4.8mm Rivet Gun



Replaceable different size nozzles, Max. rivet stainless steel nail is Ø4.8mm
Compatible with different sizes of stainless steel and aluminum nail

(Rivet nail diameter)
Ø2.4mm/3.2mm/4.0mm/4.8mm

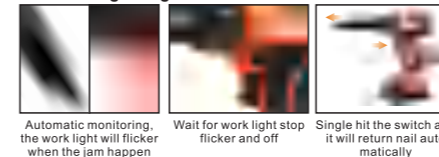
Specification

| | |
|----------------------------------|--|
| Max. power output(W) | 360 |
| Max. pulling force(KN) | 12 |
| Stroke length(mm) | 20 |
| Rivet count per charge(pcs) | 1100pcs 4.8mm Aluminum nail (a full 2.0Ah battery) |
| Size(mm) | 265 × 65 × 210 |
| Tool weight(without battery)(kg) | 1.0 |

1pcs/2s
Rivet speed



Jam releasing intelligent software



BL4302 20V Brushless 3.2-6.4mm Rivet Gun

Suitable gun nozzle height for compact space operation



Clear collection box
Check the used nail quantity



Rivet nail holding mechanism

- The rivet nail will not fall down even the tool is downward after inset rivet nail

Replaceable different size nozzles, Max. rivet steel stainless nail is Ø6.4mm
Compatible with different sizes of stainless steel and aluminum nail

(Rivet nail diameter)
Ø3.2mm/4.0mm/4.8mm/6.4mm

1200^{pcs}
Ø6.4mm Aluminum nail (a full 2.0Ah battery)

1pcs/2s
Rivet speed

Specification

| | |
|----------------------------------|--|
| Max. power output(W) | 360 |
| Max. pulling force(KN) | 30 |
| Stroke length(mm) | 28 |
| Rivet count per charge(pcs) | 1200pcs 6.4mm Aluminum nail (a full 2.0Ah battery) 2300pcs 6.4mm Aluminum nail (a full 4.0Ah battery) |
| Size(mm) | 250 × 65 × 227 |
| Tool weight(without battery)(kg) | 1.5 |



BL5401 20V Brushless Blower

Removable air tube
Rotary connection to detachable and reduce storage space

4 shift motor power indication
Clear and easy understand

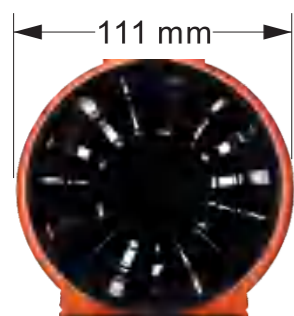
Stepless speed adjustment

Weight (without battery)
1.0 KG

Ergonomic handle
Comfortable and non-slip

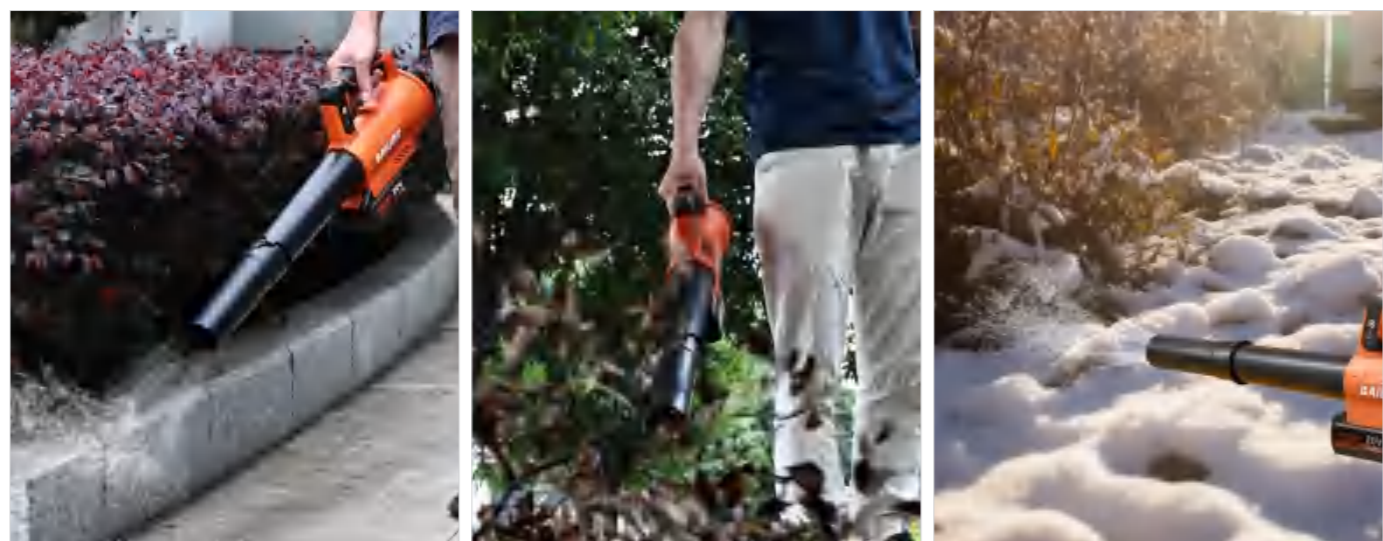
Scientific air intake design
High efficiency intake air

Turbocharged fan
Increasing air intake, double release air power by turbocharged fan
58 m/s



Compact body
111 mm

| Specification | |
|----------------------------------|-------------|
| Max.air volume(m³/min) | 8.5 |
| Max.air speed(m/s) | 58 |
| No-load speed(rpm) | 0-25000 |
| Sound Pressure Level(dB(A)) | 79.1 |
| Vibration level(m/s²) | 2.5 or less |
| Size(mm) | 660×111×195 |
| Tool weight(without battery)(kg) | 1.0 |



Dust cleaning

Leaf cleaning

Snow cleaning

BL6301 20V Brushless Inflator



LED work light
Suitable for darkness working



Lock button
Release your hand



Atomization function
Can be used for liquid spraying by applying atomization accessory
Durable working time and long spraying distance



Valve adaptor



Preset pressure, digital display and automatic stop

Machine will automatically stop when reach the preset pressure to avoid danger

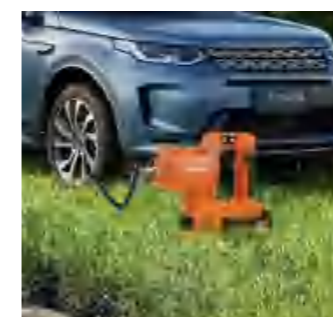


3 different units display
psi, bar, kpa

Max.air pressure

800 ^[116psi] kpa

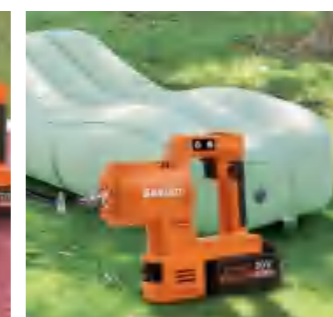
| Specification | |
|----------------------------------|------------|
| Max.air pressure(kPa) | 800 |
| Max.ouput wattage(W) | 180 |
| Size(mm) | 274×63×217 |
| Tool weight(without battery)(kg) | 1.1 |



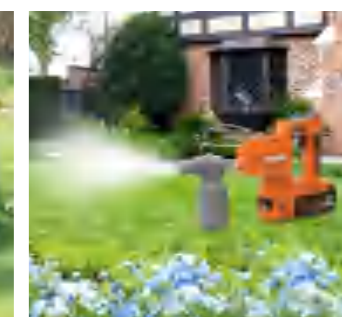
Tyre inflation



Balls inflation



Air pillow inflation



Liquid spraying